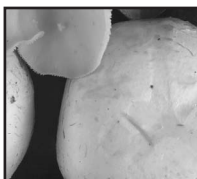
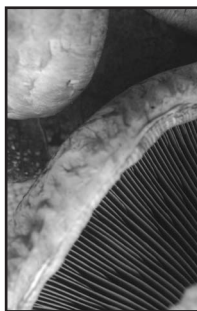


## Department 013C Commercial Mushrooms

### Rules and Regulations

1. This department is open to all commercial and professional mushroom growers located in Chester, Delaware and Lancaster Counties.
2. The exhibit must contain required size specified in each class.
3. Exhibits will be accepted also on Thursday morning from 8:00 to 10:00 just before judging.
4. Ribbons only awarded. Judges may award a Best of Show ribbon.



## Section 001 Whites or Off Whites

### Classes

#### 3lb. basket/boxes

- 1300 Buttons 1-1/4" or less  
1301 Mediums: 1-1/2" - 1-3/4"  
1302 Large 2"

#### Bulk 5 lb box

- 1303 Button: 1-1/4" or less  
1304 Medium: 1-1/2"-1-3/4"  
1305 Large: 2"

**Tills** 2 or more per entry, but only 2 will be used for judging.

**NO LABELING** on top – no washed

- 1306 8 oz.  
1307 12 oz.  
1308 16 oz.  
1309 8 oz. sliced  
1310 12 oz. sliced

## Section 002

### Exotics

#### Classes

#### 5 lb. box

- 1311 Shiitake,  
1312 Oyster  
1313 Crimini  
1314 Portobello 4"  
1315 Portobello 5"  
1316 Other Exotic

**Tills** 2 or more per entry, but only 2 will be used for judging.

**NO LABELING** on top – no washed

- 1317 8 oz. Crimini  
1318 12 oz. Crimini  
1319 12 oz. Sliced Crimini  
1320 16 oz. Sliced Portobello  
1321 3.5oz. Shiitake  
1322 3.5oz. Oyster  
1323 3.5oz Maitake  
1324 3.5oz Enoki

- 1325 3.5oz Morel  
1326 3.5oz Beech  
1327 3.5oz Other Exotic

## Department 014C Commercial Fruits

### Rules and Regulations

1. This department is open to all commercial orchards and professional growers in Chester, Delaware and Lancaster Counties.
2. The required number of specimens to be exhibited in all classes is five (5) unless otherwise stated.

Premiums 1st \$6 2nd \$4 3rd \$2

## SECTION 003

### Apples

#### Classes

- 1400 Empire  
1401 Fuji  
1402 Gala  
1403 Golden or Yellow Delicious  
1404 Granny Smith  
1405 Ida Red  
1406 Jonathan  
1407 Jonagold  
1408 Macoun  
1409 McIntosh  
1410 Mutsu (Crispin)  
1411 Pink Lady  
1412 Red Delicious  
1413 Rome  
1414 Smokehouse  
1415 Stayman  
1416 Winesap  
1417 York  
1418 Any other

### Tray Pack (specimen - 88 count)

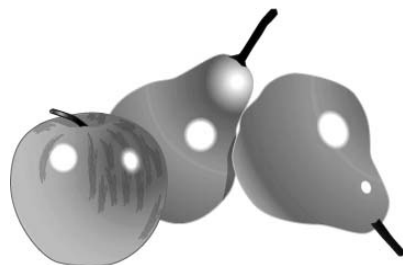
- 1419 Fuji  
1420 Gala  
1421 Golden or Yellow Delicious  
1422 Jonathan  
1423 Red Delicious  
1424 Rome  
1425 Stayman  
1426 Any Other

## SECTION 002

### Pears

#### Classes

- 1427 Asian  
1428 Bartlett Type  
1429 Bosc



- 1430 D'Anjou  
 1431 Sickle  
 1432 Sheldon  
 1433 Any Other

**DEPARTMENT 017C****Adult Commercial Flowers****RULES AND REGULATIONS**

1. This department is open to all commercial florists and growers in Southern Chester County by invitation from the Unionville Fair.
2. The required number of specimens for cutflowers is six (6) specimens, except lilies as noted
3. Floral Design arrangements must use live flowers/plants. Artificial adornments i.e. ribbons, netting etc. are permitted. Size requirement where listed. Judged on appeal, presentation, technique, material and theme.
4. Judges may award one Best of Show ribbon for excellence.

**Premiums**

1st	2nd	3rd
\$6	\$4	\$2

**SECTION 001****Carnations****Classes****Standard**

- 1500 Pink  
 1501 Red  
 1502 Variegated  
 1503 White  
 1504 Yellow  
 1505 Any other color

**Miniature**

- 1506 Single color  
 1507 Variegated

**SECTION 002****Chrysanthemums****Any color**

- 1508 Pompom, small  
 1509 Pompom, large  
 1510 Spider  
 1511 Standard  
 1512 Any other

**SECTION 003****Lilies****3 stems, at least one open**

- 1513 Bronze  
 1514 Lavender  
 1515 Orange  
 1516 Peach  
 1517 Pink



- 1518 Red  
 1519 White  
 1520 Yellow  
 1521 Any other color

**SECTION 004****Snapdragons**

- 1522 Bi-color  
 1523 Lavender  
 1524 Orange  
 1525 Pink  
 1526 Purple  
 1527 Red  
 1528 White  
 1529 Yellow  
 1530 Any other color

**SECTION 005****Daisy, Gerbera**

- 1531 Pink  
 1532 Red  
 1533 White  
 1534 Yellow  
 1535 Any other color

**SECTION 006****Floral Designs**

- 1536 Corsage, wrist  
 1537 Corsage, pin-on  
 1538 Bridal bouquet, nosegay  
 1539 Bridal bouquet, floral bundle

**Table centerpiece, small ( Max height 12")**

- 1540 Holiday theme  
 1541 Seasonal theme  
 1542 Fair theme

**Table centerpiece, large (Min. height 12")**

- 1543 Holiday theme  
 1544 Seasonal theme

**1545 Fair theme**